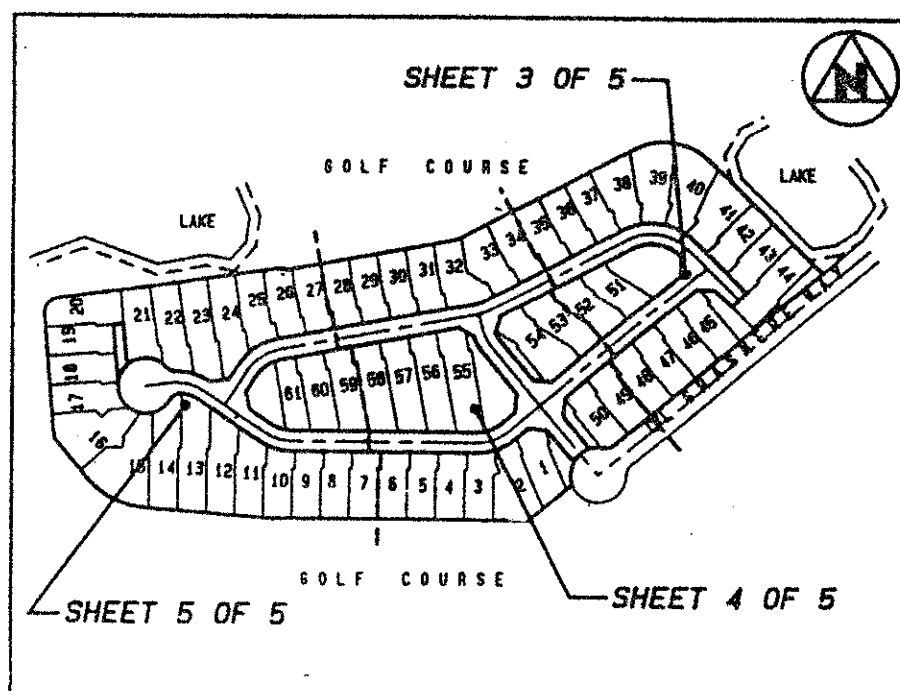


WYCLIFFE TRACT "G"

106

A PLANNED UNIT DEVELOPMENT
 BEING A PART OF WYCLIFFE GOLF AND COUNTRY CLUB (FORMERLY KNOWN AS SUNDIAL COUNTRY CLUB),
 AND BEING A REPLAT OF TRACT "G", WYCLIFFE PLAT THREE, AS RECORDED IN PLAT BOOK 69, PAGE 134,
 AND LYING AND BEING IN SECTION 25, TOWNSHIP 44 SOUTH, RANGE 41 EAST, PALM BEACH COUNTY, FLORIDA.



KEY MAP (NOT TO SCALE)

ACCEPTANCE OF RESERVATIONS:

STATE OF FLORIDA)
) SS
 COUNTY OF PALM BEACH)
 GREENBRIAR OF WYCLIFFE HOMEOWNERS' ASSOCIATION, INC. A FLORIDA NOT-FOR-PROFIT CORPORATION HEREBY ACCEPTS THE RESERVATIONS TO SAID ASSOCIATION AS STATED AND SHOWN HEREON, AND HEREBY ACCEPTS ITS MAINTENANCE OBLIGATIONS FOR SAME AS STATED HEREON, DATED THIS 28 DAY OF November, 1992.

GREENBRIAR OF WYCLIFFE HOMEOWNERS' ASSOCIATION, INC.
 A FLORIDA NOT-FOR-PROFIT CORPORATION
 ATTEST: Paulette R. Mortimer SECRETARY
 BY: Richard A. Jerman PRESIDENT

ACKNOWLEDGEMENT:

STATE OF FLORIDA)
) SS
 COUNTY OF PALM BEACH)

BEFORE ME PERSONALLY APPEARED RICHARD A. JERMAN AND PAULETTE R. MORTIMER, WHO ARE PERSONALLY KNOWN TO ME AND WHO EXECUTED THE FOREGOING AS PRESIDENT AND SECRETARY OF GREENBRIAR OF WYCLIFFE HOMEOWNERS' ASSOCIATION, INC. A FLORIDA NOT-FOR-PROFIT CORPORATION, AND SEVERALLY ACKNOWLEDGED TO AND BEFORE ME THAT THEY EXECUTED SUCH INSTRUMENT AS SUCH OFFICERS OF SAID CORPORATION, AND THAT THE SEAL AFFIXED TO THE FOREGOING INSTRUMENT IS THE CORPORATE SEAL OF SAID CORPORATION AND THAT IT WAS AFFIXED TO SAID INSTRUMENT BY DUE AND REGULAR CORPORATE AUTHORITY, AND THAT SAID INSTRUMENT IS THE FREE ACT AND DEED OF SAID CORPORATION.

WITNESS MY HAND AND OFFICIAL SEAL THIS 28 DAY OF Nov., 1992.

MY COMMISSION EXPIRES: MAY 10, 1995

Marlene M. De Thuin
 MARLENE M. DE THUIN
 NOTARY PUBLIC # 00098818

ACCEPTANCE OF RESERVATIONS:

STATE OF FLORIDA)
) SS
 COUNTY OF PALM BEACH)
 WYCLIFFE COMMUNITY ASSOCIATION, INC. HEREBY ACCEPTS THE RESERVATIONS TO SAID ASSOCIATION AS STATED AND SHOWN HEREON, AND HEREBY ACCEPTS ITS MAINTENANCE OBLIGATIONS FOR SAME AS STATED HEREON, DATED THIS 18 DAY OF November, 1992.

WYCLIFFE COMMUNITY ASSOCIATION, INC.
 A FLORIDA CORPORATION
 ATTEST: Paulette R. Mortimer SECRETARY
 BY: Richard A. Jerman PRESIDENT

ACKNOWLEDGEMENT:

STATE OF FLORIDA)
) SS
 COUNTY OF PALM BEACH)

BEFORE ME PERSONALLY APPEARED RICHARD A. JERMAN AND PAULETTE R. MORTIMER, WHO ARE PERSONALLY KNOWN TO ME AND WHO EXECUTED THE FOREGOING AS PRESIDENT AND SECRETARY OF WYCLIFFE COMMUNITY ASSOCIATION, INC. A CORPORATION, AND SEVERALLY ACKNOWLEDGED TO AND BEFORE ME THAT THEY EXECUTED SUCH INSTRUMENT AS SUCH OFFICERS OF SAID CORPORATION, AND THAT THE SEAL AFFIXED TO THE FOREGOING INSTRUMENT IS THE CORPORATE SEAL OF SAID CORPORATION AND THAT IT WAS AFFIXED TO SAID INSTRUMENT BY DUE AND REGULAR CORPORATE AUTHORITY, AND THAT SAID INSTRUMENT IS THE FREE ACT AND DEED OF SAID CORPORATION.

WITNESS MY HAND AND OFFICIAL SEAL THIS 18 DAY OF Nov., 1992.

MY COMMISSION EXPIRES: MAY 10, 1995

Marlene M. De Thuin
 MARLENE M. DE THUIN
 NOTARY PUBLIC # 00098818

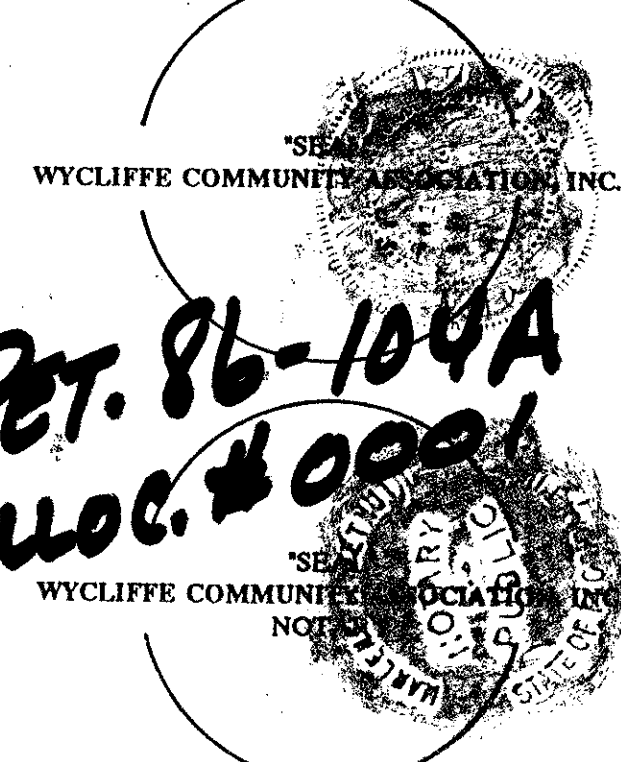
SURVEYOR'S CERTIFICATE:

STATE OF FLORIDA)
) SS
 COUNTY OF PALM BEACH)
 I HEREBY CERTIFY, THAT THE PLAT SHOWN HEREON IS A TRUE AND CORRECT REPRESENTATION OF A SURVEY MADE UNDER MY RESPONSIBLE DIRECTION AND SUPERVISION, THAT SAID SURVEY IS ACCURATE TO THE BEST OF MY KNOWLEDGE AND BELIEF, THAT (P.R.M.'S) PERMANENT REFERENCE MONUMENTS HAVE BEEN PLACED AS REQUIRED BY LAW, AND (P.C.P.'S) PERMANENT CONTROL POINTS WILL BE SET UNDER THE GUARANTEES POSTED WITH PALM BEACH COUNTY FOR THE REQUIRED IMPROVEMENTS AND FURTHER THAT THE SURVEY DATA COMPLIES WITH ALL THE REQUIREMENTS OF CHAPTER 177, FLORIDA STATUTES, AS AMENDED, AND ORDINANCES OF PALM BEACH COUNTY, FLORIDA, AND FURTHER, THAT THE BOUNDARY SURVEY ENCOMPASSING THE PROPERTY SHOWN HEREON IS IN COMPLIANCE WITH CHAPTER 21HH-6, F.A.C.

BENCH MARK LAND SURVEYING & MAPPING, INC.

DATE: 11-16-92

BY: Wm. R. Van Campen
 WM. R. VAN CAMPEN, R.L.S. 2424



SURVEYOR'S NOTES:

1. BEARINGS SHOWN OR STATED HEREON, BASED ON OR RELATIVE TO THE BEARING OF SOUTH 49°59'33" WEST ALONG THE TANGENT RIGHT-OF-WAY LINE OF GRASMERIE WAY/TRACT "N" COMMON WITH THE BOUNDARY LINE OF TRACT "G", WYCLIFFE PLAT THREE, AS RECORDED IN PLAT BOOK 69, PAGE 134.
 2. [] DENOTES A #2424 PERMANENT CONTROL POINT (P.C.P.).
 3. [] DENOTES A #2424 PERMANENT REFERENCE MONUMENT (P.R.M.).
 4. THIS INSTRUMENT WAS PREPARED BY WM. R. VAN CAMPEN, R.L.S., IN AND FOR THE OFFICES OF BENCH MARK LAND SURVEYING & MAPPING, INC., 4152 WEST BLUE HERON BOULEVARD, SUITE 121, RIVIERA BEACH, FLORIDA, 33404. TELEPHONE (407) 848-2102.
- GENERAL EASEMENT NOTES & RESTRICTIVE COVENANTS:**
1. BUILDING SETBACK LINES SHALL BE AS REQUIRED BY CURRENT PALM BEACH COUNTY ZONING REGULATIONS.
 2. THERE SHALL BE NO BUILDINGS OR ANY KIND OF CONSTRUCTION SHALL BE PLACED ON UTILITY OR DRAINAGE EASEMENTS. CONSTRUCTION OR LANDSCAPING UPON MAINTENANCE OR MAINTENANCE ACCESS EASEMENTS, MUST BE IN CONFORMANCE WITH ORDINANCE 86-10 AND ALL OTHER BUILDING AND ZONING CODES AND/OR ORDINANCES OF PALM BEACH COUNTY, FLORIDA.
 3. THERE SHALL BE NO TREES OR SHRUBS PLACED UPON UTILITY EASEMENTS WHICH ARE PROVIDED FOR WATER OR SEWER USE, OR UPON DRAINAGE, LAKE MAINTENANCE OR LAKE MAINTENANCE ACCESS EASEMENTS.
 4. LANDSCAPING ON OTHER UTILITY EASEMENTS SHALL BE ALLOWED ONLY AFTER THE CONSENT OF ALL UTILITY COMPANIES OCCUPYING SAME.
 5. WHERE DRAINAGE AND UTILITY EASEMENTS INTERSECT, THE AREAS WITHIN THE INTERSECTION ARE UTILITY AND DRAINAGE EASEMENTS. CONSTRUCTION AND MAINTENANCE OF UTILITY FACILITIES SHALL NOT INTERFERE WITH THE DRAINAGE FACILITIES WITHIN THESE AREAS OF INTERSECTION.
 6. THERE SHALL BE NO LANDSCAPING OR STRUCTURES IN EXCESS OF 30 INCHES ABOVE THE LOWEST CROWN OF ADJACENT PAVEMENT LOCATION PLACED UPON THE LINE OF SIGHT EASEMENTS, AS SHOWN HEREON.
 7. NOTICE: THERE MAY BE ADDITIONAL RESTRICTIONS, NOT SHOWN ON THIS PLAT, THAT MAY BE FOUND IN THE PUBLIC RECORDS OF PALM BEACH COUNTY, FLORIDA.

0520-013

MORTGAGEE'S CONSENT:

STATE OF CONNECTICUT)
) SS
 COUNTY OF FAIRFIELD)

MSB MORTGAGE COMPANY OF FLORIDA, INC. A FLORIDA CORPORATION, HEREBY CERTIFIES THAT IT IS A HOLDER OF TWO MORTGAGES UPON THE PROPERTY DESCRIBED HEREON, AND DOES HEREBY CONSENT TO THE DEDICATION OF SAID LANDS BY THE OWNERS THEREOF, AND AGREES THAT ITS MORTGAGES WHICH ARE RECORDED IN OFFICIAL RECORD BOOK 5681 AT PAGE 897 AND OFFICIAL RECORDS BOOK 5829, AT PAGE 361, AS ASSIGNED TO MSB MORTGAGE COMPANY OF FLORIDA, INC. BY ASSIGNMENT OF MORTGAGE RECORDED IN OFFICIAL RECORDS BOOK 6971 AT PAGE 1723 OF THE PUBLIC RECORDS OF PALM BEACH COUNTY, FLORIDA, SHALL BE SUBORDINATED TO THE DEDICATIONS SHOWN HEREON.

IN WITNESS WHEREOF, MSB MORTGAGE COMPANY OF FLORIDA, INC. A FLORIDA CORPORATION, HAS CAUSED THESE PRESENTS TO BE SIGNED BY PETER M. BRESTOVAN, ITS PRESIDENT AND ATTESTED TO BY CYNTHIA H. PAYNE, ITS SECRETARY, AND ITS CORPORATE SEAL TO BE AFFIXED HERETO BY AND WITH THE AUTHORITY OF ITS BOARD OF DIRECTORS THIS 23 DAY OF November, A.D., 1992.

MSB MORTGAGE COMPANY OF FLORIDA, INC.

ATTEST: Cynthia H. Payne SECRETARY
 BY: Peter M. Brestovan PRESIDENT

ACKNOWLEDGMENT:

STATE OF CONNECTICUT)
) SS BRIDGEPORT
 COUNTY OF FAIRFIELD)

BEFORE ME PERSONALLY APPEARED PETER M. BRESTOVAN AND CYNTHIA H. PAYNE, OF MSB MORTGAGE COMPANY OF FLORIDA, WHO ARE PERSONALLY KNOWN TO ME, AND WHO EXECUTED THE FOREGOING INSTRUMENT AS PRESIDENT AND SECRETARY, RESPECTIVELY, OF SAID CORPORATION AS SUCH OFFICERS OF SAID CORPORATION, AND THAT THE SEAL AFFIXED TO THE FOREGOING INSTRUMENT IS THE CORPORATE SEAL OF SAID CORPORATION AND THAT IT WAS AFFIXED TO SAID INSTRUMENT BY DUE AND REGULAR CORPORATE AUTHORITY, AND THAT SAID INSTRUMENT IS THE FREE ACT AND DEED OF SAID CORPORATION.

WITNESS MY HAND AND OFFICIAL SEAL THIS 23 DAY OF November, 1992.

MY COMMISSION EXPIRES: OCTOBER 31, 1997

Renay Mishco
 RENAY MISHCO
 NOTARY PUBLIC

APPROVALS:

STATE OF FLORIDA)
) SS
 COUNTY OF PALM BEACH)

BOARD OF COUNTY COMMISSIONERS OF PALM BEACH COUNTY

THIS PLAT IS HEREBY APPROVED FOR RECORD THIS 20 DAY OF April, A.D., 1992.

BY: Mary McCarty
 MARY MCCARTY, CLERK

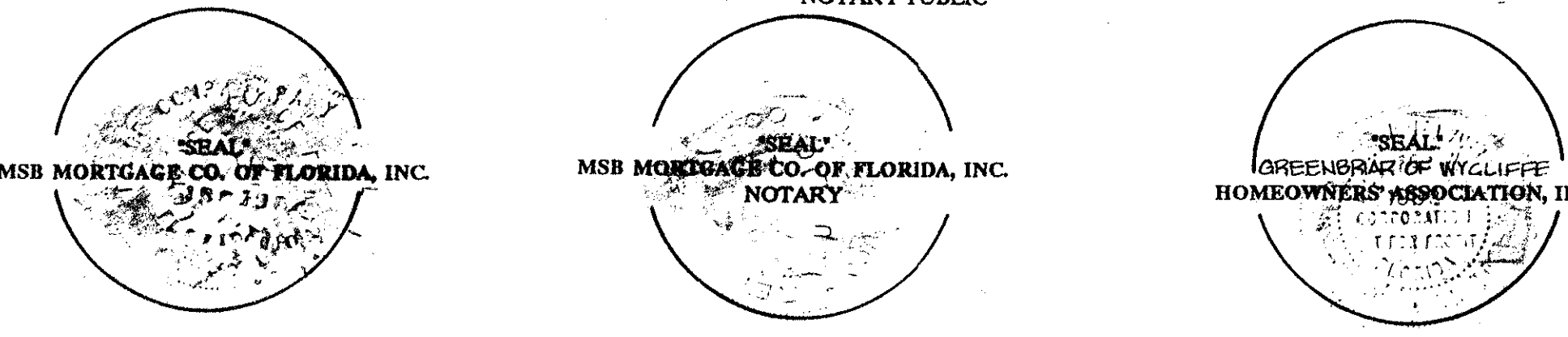
ATTEST: Dorothy H. Wilken
 DOROTHY H. WILKEN, CLERK

BY: George T. Webb
 DEPUTY CLERK

COUNTY ENGINEER:

THIS PLAT IS HEREBY APPROVED FOR RECORD THIS 20 DAY OF April, A.D., 1992.

BY: George T. Webb
 GEORGE T. WEBB P.E., COUNTY ENGINEER



BENCH MARK LAND SURVEYING & MAPPING, INC.
 WEST PALM BEACH, FLORIDA - RIVIERA BEACH, FLORIDA

-RECORD PLAT - WYCLIFFE TRACT "G"

DWN	TL	WVC	DATE 9/91	WD. NO. P109
SCALE 1/4"	SIZE 24"x36"	FB P	SHEET 2	OF 5

SUBDIVISION # WYCLIFFE TRACT "G"
 BOOK 70 PAGE 106
 FLOOD MAP # 1008
 ZONING RTS
 QUAD # 63
 SE 26-104
 ZIP CODE 33467
 PWD NAME Same
 05/4/91

TAZ = 737